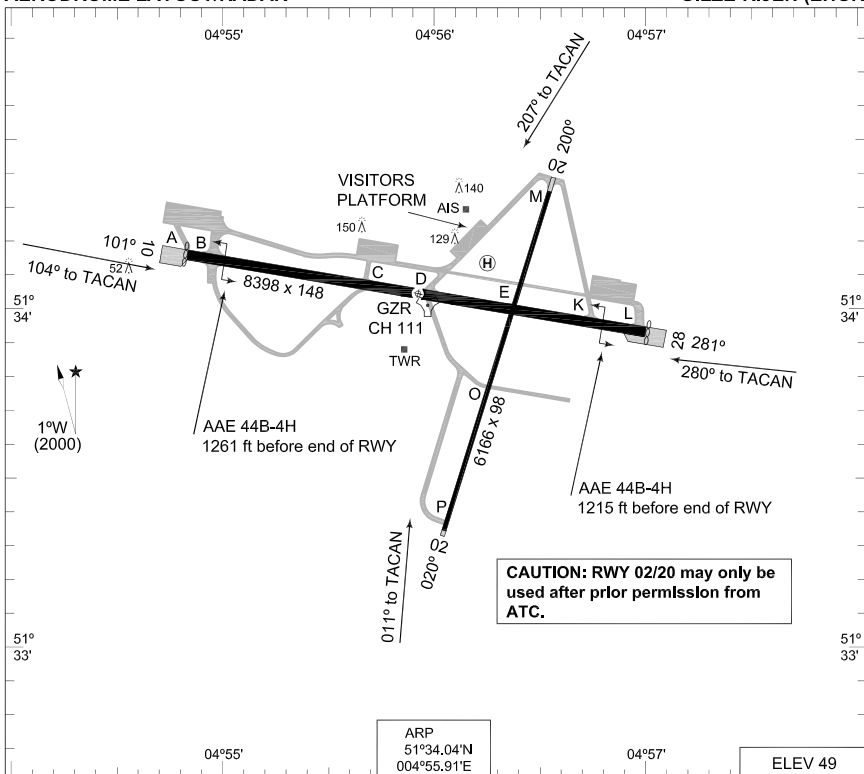


**MIPS
AERODROME LAYOUT/RADAR**

GILZE-RIJEN (EHGR)



RWY	PCN	TORA	ASDA	TODA	LDA	PAPI	TDZE	THR PSN
28	55 F/A/W/T	8709	9117	8709	8806	3.0°	38	51°33.92'N 004°57.00'E
10	55 F/A/W/T	8806	9117	8806	8709		42	51°34.16'N 004°54.83'E
20	55 F/A/W/T	6359	6549	6359	6356		40	51°34.34'N 004°56.51'E
02	55 F/A/W/T	6356	6549	6356	6359		49	51°33.38'N 004°56.02'E

GILZE-RIJEN TWR 369.500 125.325
 GILZE-RIJEN ARRIVAL 373.375
 RAPCON WEST 281.475 123.575

CIR	RWY	GS	TCH	OTCH	RPI	CAT	MINIMA		
							540	-1900	491 (500-1.9)
	10 / 28					A	670	-2800	621 (700-2.8)
	02 / 20					B	770	-3700	721 (800-3.7)
						C	910	-4600	861 (900-4.6)
						D	1000	-6500	951 (1000-6.5)
						E	540	-1900	491 (500-1.9)
						H			

AERODROME LAYOUT/RADAR

GILZE-RIJEN (EHGR)

CHANGES: PAPI, ALS, EDITORIAL

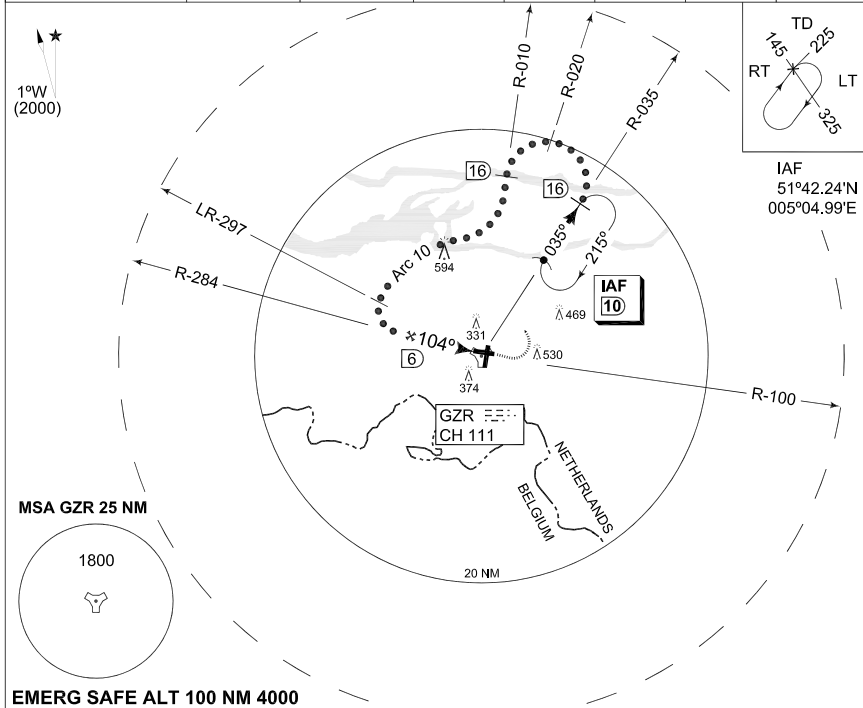
RNLAF 21 OCT 2010

**MIPS
INSTRUMENT APPROACH CHART**

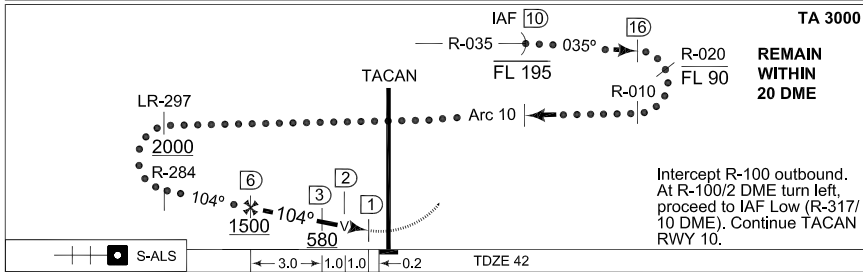
**HI-TACAN RWY 10
GILZE-RIJEN (EHGR)**

AD ELEV 49

DUTCH MIL 264.325 132.350		RAPCON WEST 281.475 123.575		GILZE-RIJEN TWR 369.500 125.325			
TACAN GZR CH 111	APP COURSE 104°	FAF ALT 1500 FT	Descent GR	MDA 440	TDZE 42	ALS 1378 FT	LDA 8709 FT



EMERG SAFE ALT 100 NM 4000



CATEGORY	C	D	E
MINIMA ACCORDING TO PANS-OPS; NOT ACCORDING TO APATC-1			
S-TACAN 10	440 -1.6 398 (400-1.6)		440 -2.0 398 (400-2.0)
CIRCLING	770 -3700 721 (800-3.7)	910 -4600 861 (900-4.6)	1000 -6500 962 (1000-6.5)

HI-TACAN RWY 10

51°34.04'N
004°55.91'E

GILZE-RIJEN (EHGR)

CHANGES: ALS, LDA

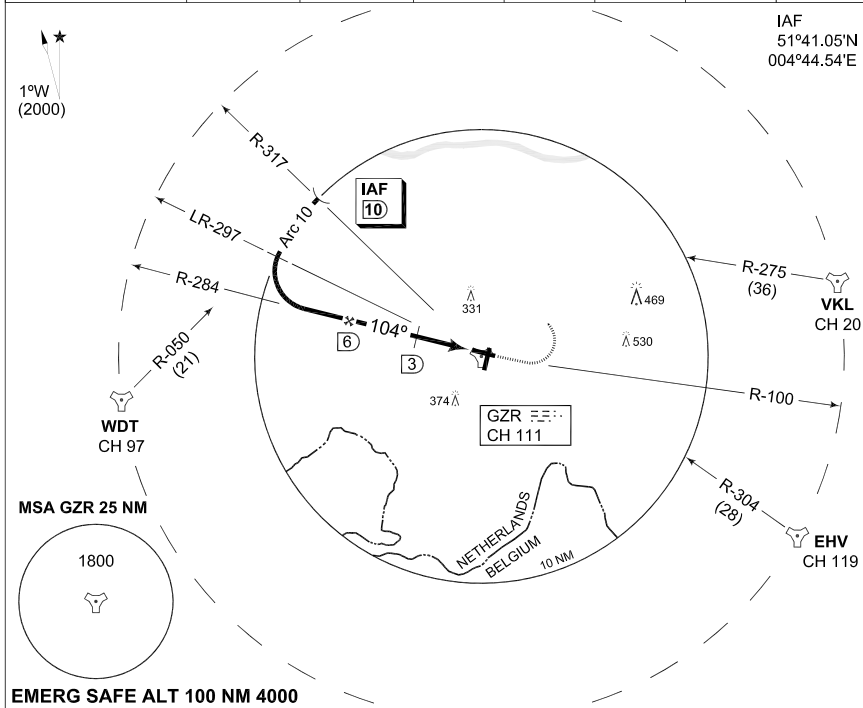
RNLAF 1 JUL 2010

**MIPS
INSTRUMENT APPROACH CHART**

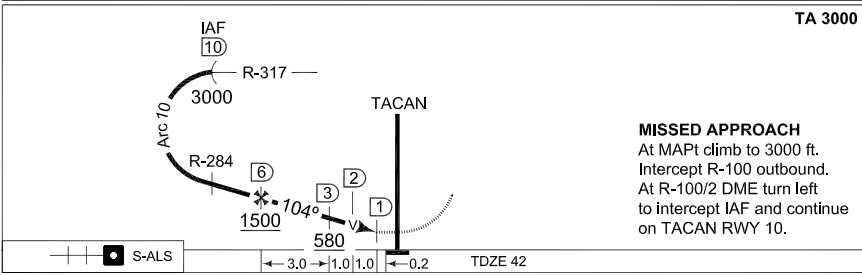
**TACAN RWY 10
GILZE-RIJEN (EHGR)**

AD ELEV 49

DUTCH MIL 264.325 132.350		RAPCON WEST 281.475 123.575		GILZE-RIJEN TWR 369.500 125.325				
TACAN GZR CH 111		APP COURSE 104°	FAF ALT 1500 FT	Descent GR	MDA 440	TDZE 42	ALS 1378 FT	LDA 8709 FT



IAF
51°41.05'N
004°44.54'E



TA 3000

CATEGORY	A	B	C	D	E
MINIMA ACCORDING TO PANS-OPS; NOT ACCORDING TO APATC-1					
S-TACAN 10	440 -1.6 398 (400-1.6)				440 -2.0 398 (400-2.0)
CIRCLING	540 -1900 491 (500-1.9)	670 -2800 621 (700-2.8)	770 -3700 721 (800-3.7)	910 -4600 861 (900-4.6)	1000 -6500 962 (1000-6.5)

TACAN RWY 10

51°34.04'N
004°55.91'E

GILZE-RIJEN (EHGR)

CHANGES: ALS, LDA

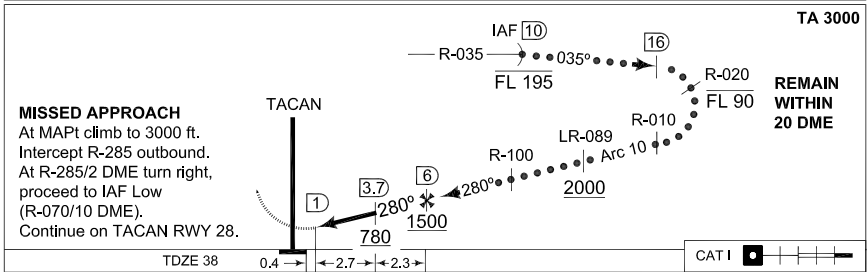
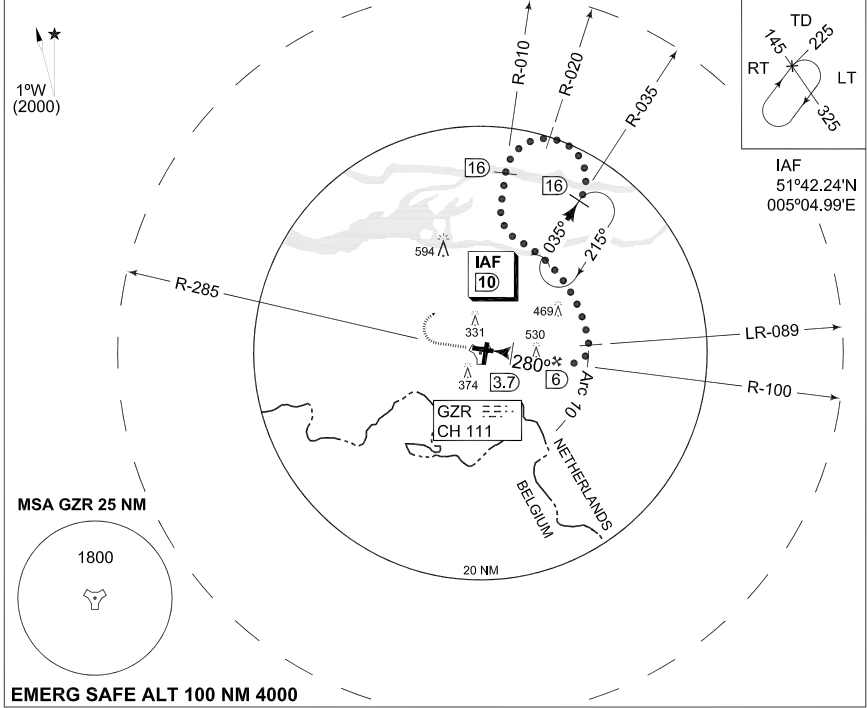
RNLAF 1 JUL 2010

**MIPS
INSTRUMENT APPROACH CHART**

**HI-TACAN RWY 28
GILZE-RIJEN (EHGR)**

AD ELEV 49

DUTCH MIL 264.325 132.350		RAPCON WEST 281.475 123.575		GILZE-RIJEN TWR 369.500 125.325			
TACAN GZR CH 111	APP COURSE 280°	FAF ALT 1500 FT	Descent GR	MDA 400	TDZE 38	ALS 2559 FT	LDA 8806 FT



CATEGORY	C		D		E
MINIMA ACCORDING TO PANS-OPS; NOT ACCORDING TO APATC-1					
S-TACAN 28	400 -800 362 (400-0.8)		400 -1200 362 (400-1.2)		
CIRCLING	770 -3700 721 (800-3.7)		910 -4600 861 (900-4.6)		1000 -6500 951 (1000-6.5)

CHANGES: ALS, LDA

RNLAF 1 JUL 2010

HI-TACAN RWY 28

51°34.04'N
004°55.91'E

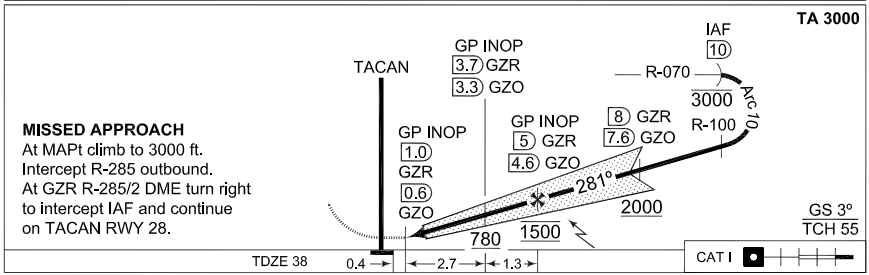
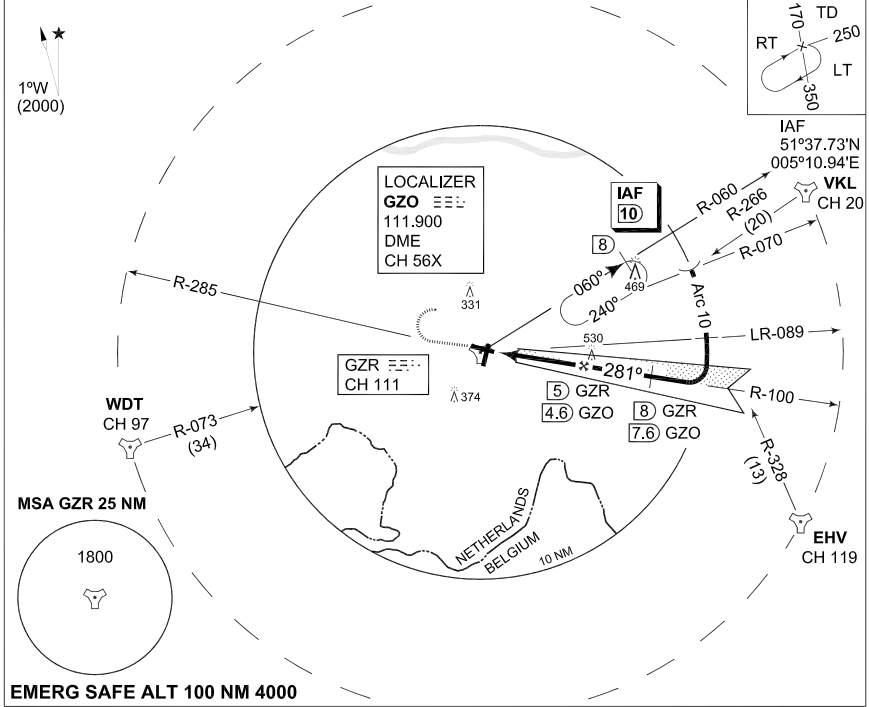
GILZE-RIJEN (EHGR)

**MIPS
INSTRUMENT APPROACH CHART**

**TACAN ILS/DME RWY 28
GILZE-RIJEN (EHGR)**

AD ELEV 49

DUTCH MIL 264.325 132.350		RAPCON WEST 281.475 123.575		GILZE-RIJEN TWR 369.500 125.325					
TACAN / LOCALIZER / DME GZR CH 111 / GZO 111.900 / CH 56X			APP COURSE 281°	GS INTCP ALT 1500 FT	GS 3°	DA SEE CAT	TDZE 38	ALS 2559 FT	LDA 8806 FT



CATEGORY	COPTER	A	B	C	D
ILS MINIMA ACCORDING TO PANS-OPS: NOT ACCORDING TO APATC-1					
S-ILS 28	238 -400 200 (200-0.4)	238 -800 200 (200-0.8)		248 -800 210 (300-0.8)	
S-LOC 28	380 -400 342 (400-0.4)	380 -1200 342 (400-1.2)			
CIRCLING	540 -1900 491 (500-1.9)	670 -2800 621 (700-2.8)	770 -3700 721 (800-3.7)	910 -4600 861 (900-4.6)	

TACAN ILS/DME RWY 28

51°34.04'N
004°55.91'E

GILZE-RIJEN (EHGR)

CHANGES: ALS, LDA

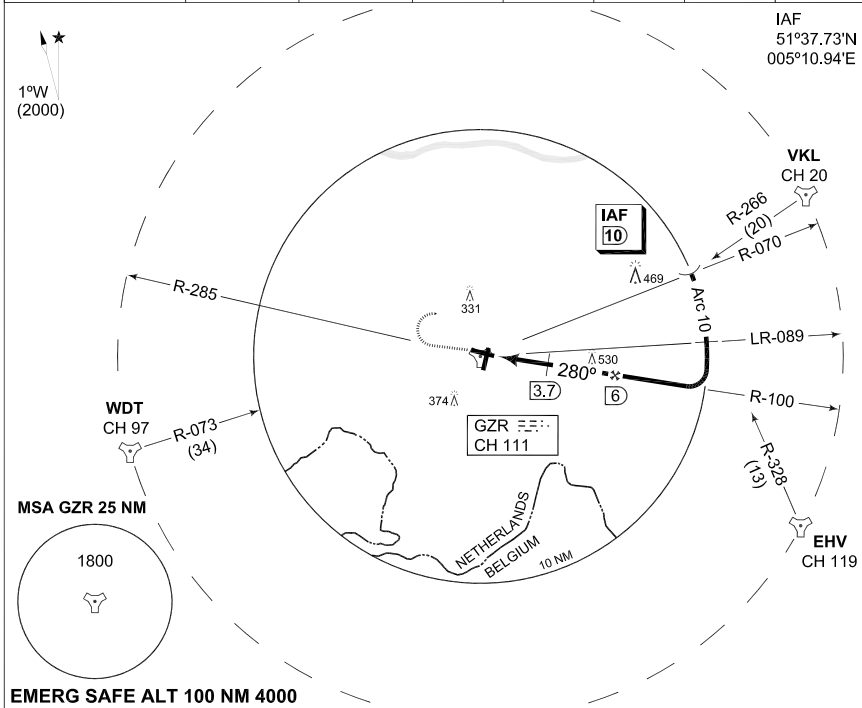
RNLAF 1 JUL 2010

**MIPS
INSTRUMENT APPROACH CHART**

**TACAN RWY 28
GILZE-RIJEN (EHGR)**

AD ELEV 49

DUTCH MIL 264.325 132.350		RAPCON WEST 281.475 123.575		GILZE-RIJEN TWR 369.500 125.325			
TACAN GZR CH 111	APP COURSE 280°	FAF ALT 1500 FT	Descent GR	MDA 400	TDZE 38	ALS 2559 FT	LDA 8806 FT

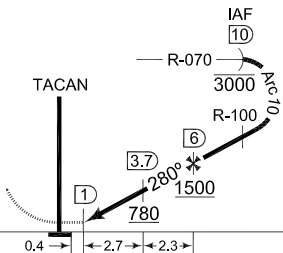


EMERG SAFE ALT 100 NM 4000

TA 3000

MISSED APPROACH

At MAPt climb to 3000 ft.
Intercept R-285 outbound.
At R-285/2 DME turn right
to intercept IAF and continue
on TACAN RWY 28.



TDZE 38

CAT I

CATEGORY	A	B	C	D	E
MINIMA ACCORDING TO PANS-OPS; NOT ACCORDING TO APATC-1					
S-TACAN 28	400 -800 362 (400-0.8)			400 -1200 362 (400-1.2)	
CIRCLING	540 -1900 491 (500-1.9)	670 -2800 621 (700-2.8)	770 -3700 721 (800-3.7)	910 -4600 861 (900-4.6)	1000 -6500 951 (1000-6.5)

TACAN RWY 28

51°34.04'N
004°55.91'E

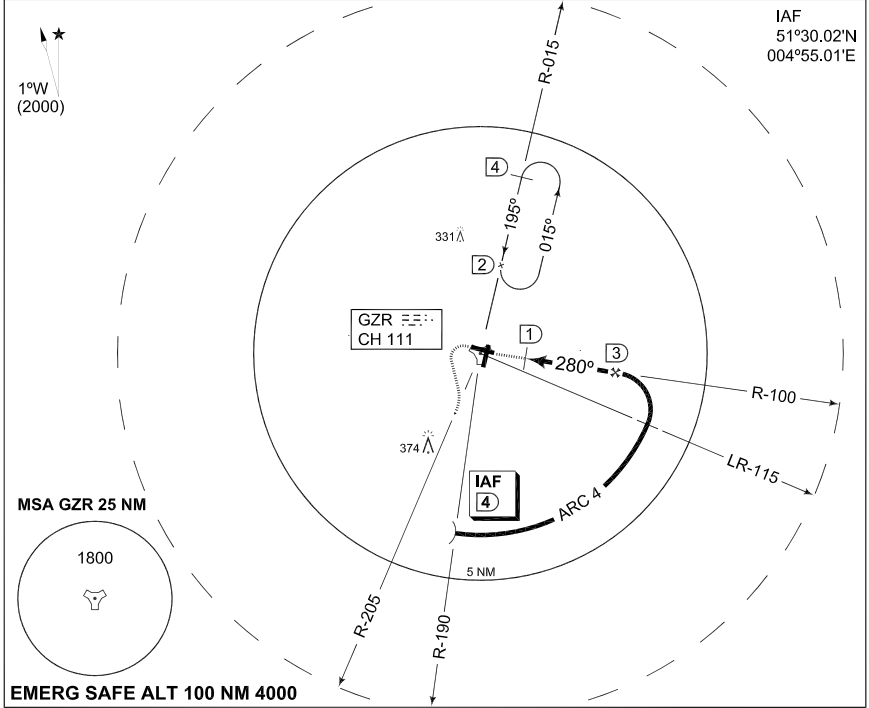
GILZE-RIJEN (EHGR)

**MIPS
INSTRUMENT APPROACH CHART**

**COPTER TACAN 280
GILZE-RIJEN (EHGR)**

AD ELEV 49

DUTCH MIL 264.325 132.350		RAPCON WEST 281.475 123.575		GILZE-RIJEN TWR 369.500 125.325			
TACAN GZR CH 111	APP COURSE 280°	FAF ALT 1100 FT	Descent GR	MDA 420	TDZE 38	ALS 2559 FT	LDA 8806 FT



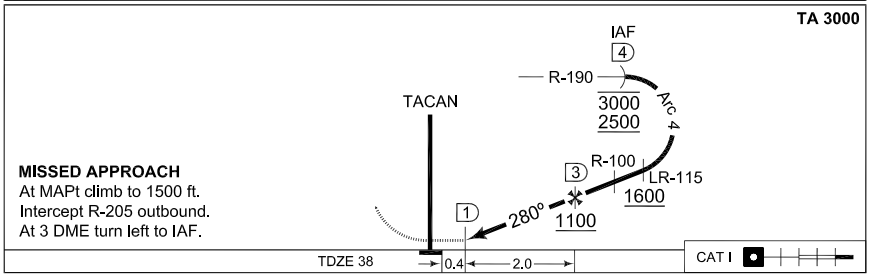
IAF
51°30.02'N
004°55.01'E

MSA GZR 25 NM

1800

EMERG SAFE ALT 100 NM 4000

TA 3000



MISSED APPROACH
At MAPt climb to 1500 ft.
Intercept R-205 outbound.
At 3 DME turn left to IAF.

TDZE 38

CAT I

CATEGORY	COPTER
S-TACAN 280	420 -400 382 (400-0.4)
CIRCLING	500 -1.6 451 (500-1.6)

CHANGES: ALS, LDA

RNLAF 1 JUL 2010

COPTER TACAN 280

51°34.04'N
004°55.91'E

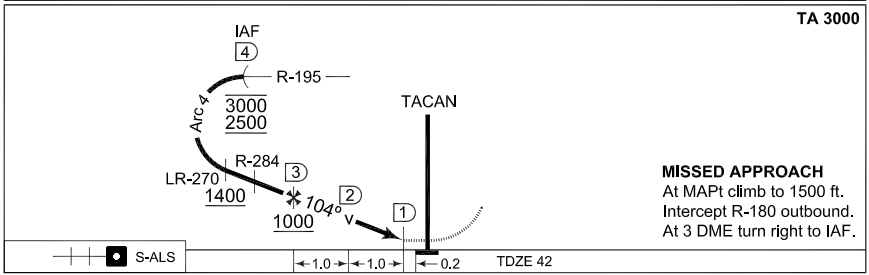
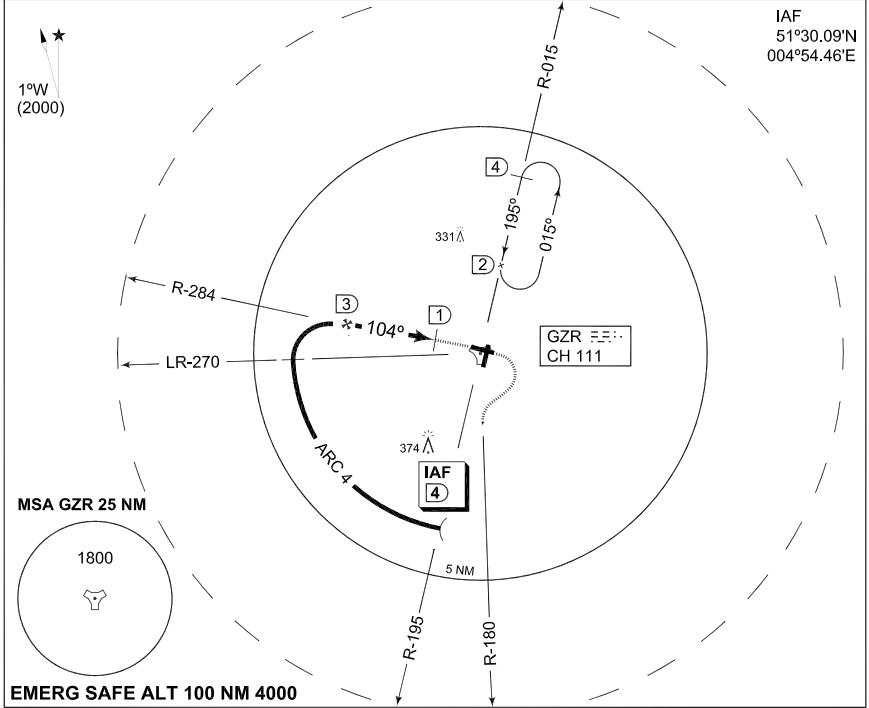
GILZE-RIJEN (EHGR)

**MIPS
INSTRUMENT APPROACH CHART**

AD ELEV 49

**COPTER TACAN 104
GILZE-RIJEN (EHGR)**

DUTCH MIL 264.325 132.350		RAPCON WEST 281.475 123.575		GILZE-RIJEN TWR 369.500 125.325			
TACAN GZR CH 111	APP COURSE 104°	FAF ALT 1000 FT	Descent GR	MDA 440	TDZE 42	ALS 1378 FT	LDA 8709 FT



+	+	+	S-ALS	← 1.0 →	← 1.0 →	← 0.2 →	TDZE 42
CATEGORY	COPTER						
S-TACAN 104	440 -0.4 398 (400-0.4)						
CIRCLING	500 -1.6 451 (500-1.6)						

CHANGES: ALS, LDA

COPTER TACAN 104

51°34.04'N
004°55.91'E

GILZE-RIJEN (EHGR)

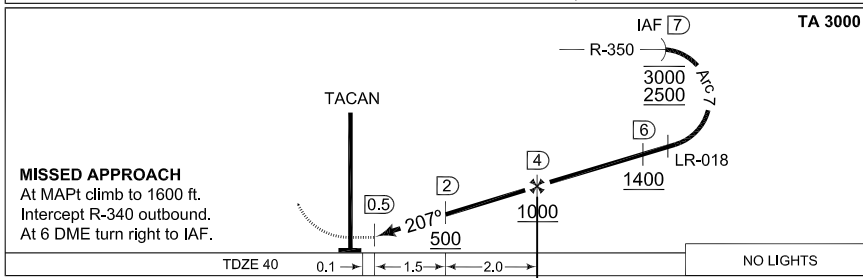
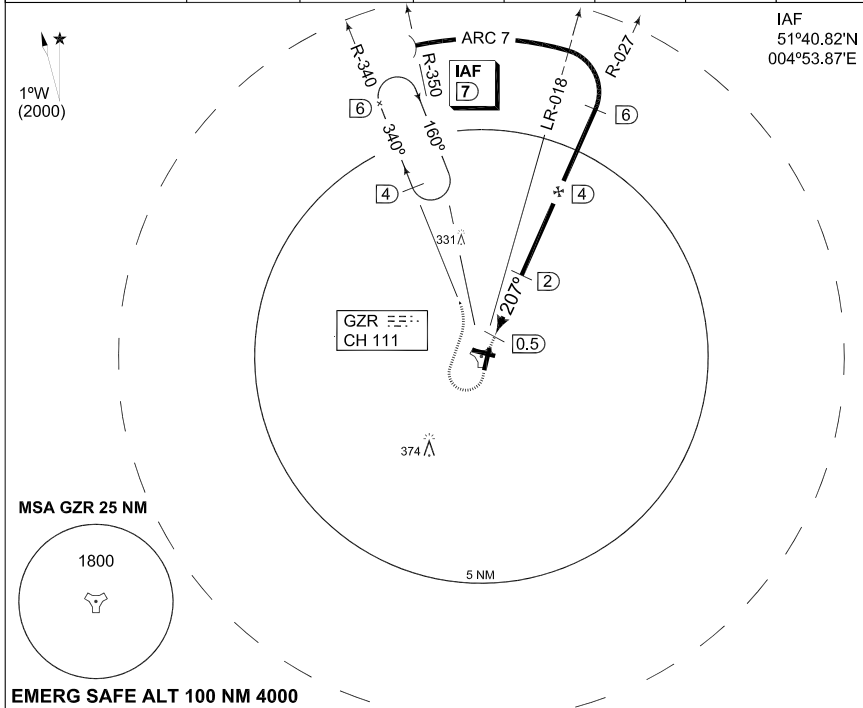
RNLAF 1 JUL 2010

**MIPS
INSTRUMENT APPROACH CHART**

**COPTER TACAN 207
GILZE-RIJEN (EHGR)**

AD ELEV 49

DUTCH MIL 264.325 132.350		RAPCON WEST 281.475 123.575		GILZE-RIJEN TWR 369.500 125.325			
TACAN GZR CH 111	APP COURSE 207°	FAF ALT 1000 FT	Descent GR	MDA 420	TDZE 40	ALS -	LDA 6356 FT



TA 3000		
MISSED APPROACH		
At MAPt climb to 1600 ft.		
Intercept R-340 outbound.		
At 6 DME turn right to IAF.		
TDZE 40	0.1	NO LIGHTS
TDZE 40	0.1	NO LIGHTS
CATEGORY	COPTER	
S-TACAN 207	420 -0.8 380 (400-0.8)	
CIRCLING	500 -1.6 451 (500-1.6)	

COPTER TACAN 207

51°34.04'N
004°55.91'E

GILZE-RIJEN (EHGR)

CHANGES: LDA, EDITORIAL

RNLAF 1 JUL 2010

**MIPS
INSTRUMENT APPROACH CHART**

**COPTER TACAN 011
GILZE-RIJEN (EHGR)**

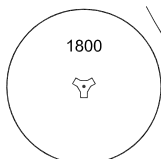
AD ELEV 49

DUTCH MIL 264.325 132.350		RAPCON WEST 281.475 123.575		GILZE-RIJEN TWR 369.500 125.325			
TACAN GZR CH 111	APP COURSE 011°	FAF ALT 800 FT	Descent GR	MDA 460	TDZE 49	ALS -	LDA 6359 FT

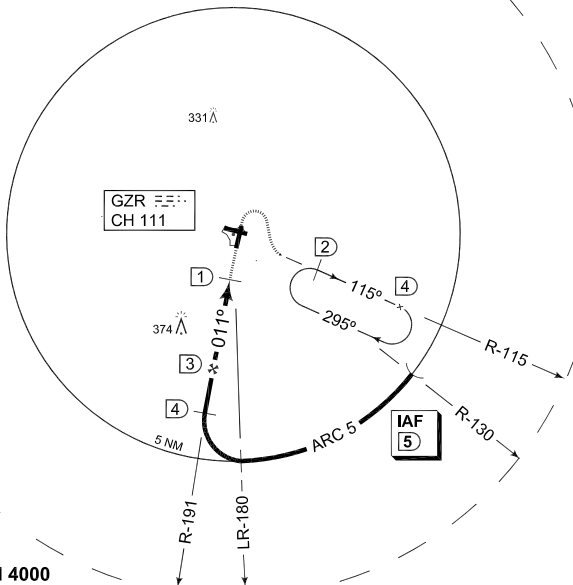
IAF
51°30.82'N
005°02.23'E

1°W
(2000)

MSA GZR 25 NM



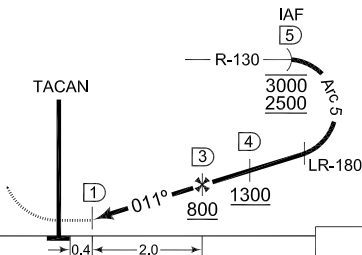
EMERG SAFE ALT 100 NM 4000



TA 3000

MISSED APPROACH

At MAPt climb to 1500 ft.
Intercept R-115 outbound.
At 4 DME turn right to IAF.



TDZE 49

NO LIGHTS

CATEGORY	COPTER	
S-TACAN 011	460 -0.8 411 (500-0.8)	
CIRCLING	500 -1.6 451 (500-1.6)	

COPTER TACAN 011

51°34.04'N
004°55.91'E

GILZE-RIJEN (EHGR)

CHANGES: LDA, EDITORIAL

RNLAF 1 JUL 2010