



**MIPS INSTRUMENT APPROACH CHART**

**ILS/DME RWY 06L VOLKEL (EHVK)**

AD ELEV 72

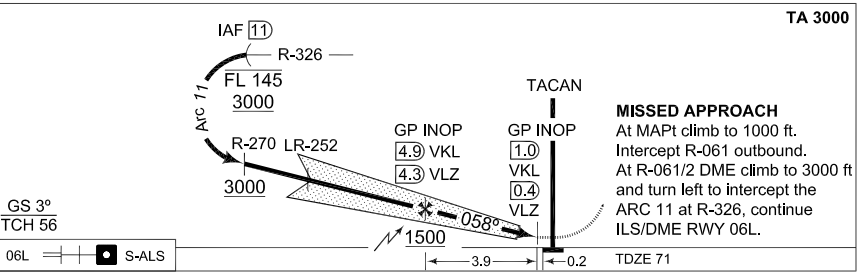
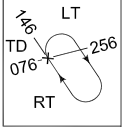
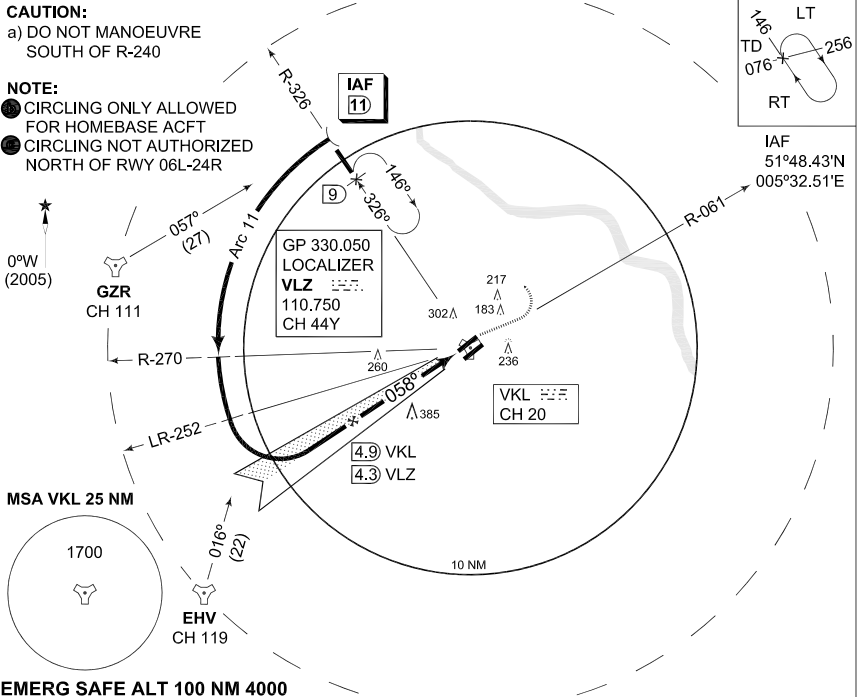
DUTCH MIL 264.325 132.350		RAPCON SOUTH 379.925 123.175		VOLKEL TWR 372.225 136.075			GND CTL 386.775	
LOCALIZER / DME VLZ 110.750 / CH 44Y		APP COURSE 058°	GS INTCP ALT 1500 FT	GS 3°	DA 271	TDZE 71	ALS 06L-1427 FT	LDA 06L-9478 FT

**CAUTION:**

a) DO NOT MANOEUVRE SOUTH OF R-240

**NOTE:**

- CIRCLING ONLY ALLOWED FOR HOMEBASE ACFT
- CIRCLING NOT AUTHORIZED NORTH OF RWY 06L-24R



CATEGORY	A	B	C	D	E
S-ILS 06L		<b>271</b> -1200 200 (200-1.2)			N.A.
S-LOC 06L		<b>350</b> -1200 279 (300-1.2)			N.A.
CIRCLING	<b>470</b> -1900 398 (400-1.9)	<b>570</b> -2800 498 (500-2.8)	<b>780</b> -3700 708 (800-3.7)	<b>780</b> -4600 708 (800-4.6)	<b>880</b> -6500 808 (900-6.5)

**ILS/DME RWY 06L**

51°39.43'N  
005°42.47'E

**VOLKEL (EHVK)**

CHANGES: ALS

RNLAF - JUL 2010

**MIPS INSTRUMENT APPROACH CHART**

AD ELEV 72

**TACAN RWY 06L/06R VOLKEL (EHVK)**

DUTCH MIL 264.325 132.350		RAPCON SOUTH 379.925 123.175		VOLKEL TWR 372.225 136.075		GND CTL 386.775	
TACAN VKL CH 20	APP COURSE 061°	FAF ALT 1500 FT	Descent GR	MDA 430	TDZE 71	ALS 06L- 1427FT/ 06R- 1378FT	LDA 06L- 9478FT/ 06R- 9485FT

**CAUTION:**

a) DO NOT MANOEUVRE SOUTH OF R-240

**NOTE:**

- ① RWY 06R FINAL RADIAL 240
- ② CIRCLING ONLY ALLOWED FOR HOMEBASE ACFT
- ③ CIRCLING NOT AUTHORIZED NORTH OF RWY 06L-24R

0°W (2005)

GZR CH 111

MSA VKL 25 NM

1700

EHV CH 119

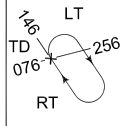
IAF 11

9

6

VKL CH 20

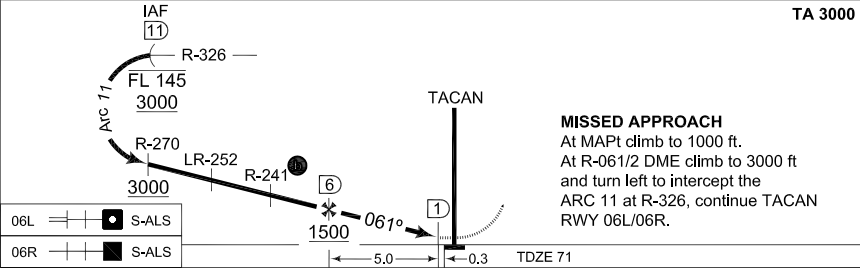
10 NM



IAF 51°48.43'N 005°32.51'E

**EMERG SAFE ALT 100 NM 4000**

**TA 3000**



**MISSED APPROACH**  
At MAPt climb to 1000 ft.  
At R-061/2 DME climb to 3000 ft and turn left to intercept the ARC 11 at R-326, continue TACAN RWY 06L/06R.

06L	+	+	+	S-ALS
06R	+	+	+	S-ALS

CATEGORY	A	B	C	D	E
S-TAC 06L	430 -800 359 (400-0.8)		430 -1200 359 (400-1.2)	430 -1600 359 (400-1.6)	
S-TAC 06R	430 -1200 359 (400-1.2)			430 -1600 359 (400-1.6)	
CIRCLING ② ①	470 -1900 398 (400-1.9)	570 -2800 498 (500-2.8)	780 -3700 708 (800-3.7)	780 -4600 708 (800-4.6)	880 -6500 808 (900-6.5)

**TACAN RWY 06L/06R**

51°39.43'N  
005°42.47'E

**VOLKEL (EHVK)**

CHANGES: ALS

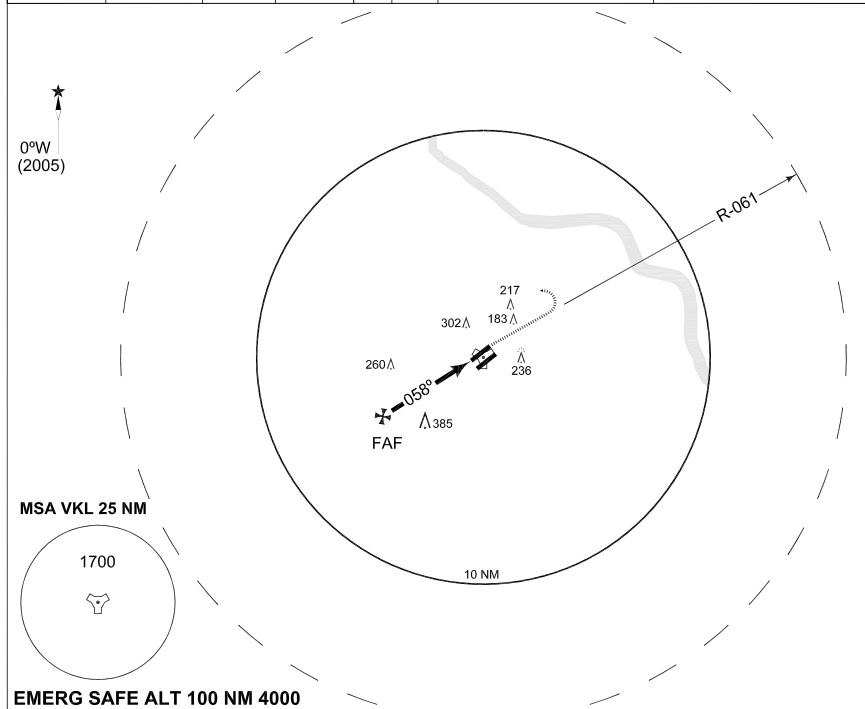
RNLAF 1 JUL 2010

**PANS OPS  
INSTRUMENT APPROACH CHART**

**SRE RWY 06L/06R  
VOLKEL (EHVK)**

AD ELEV 72

DUTCH MIL 264.325 132.350		RAPCON SOUTH 379.925 123.175		VOLKEL TWR 372.225 136.075		GND CTL 386.775	
TACAN VKL CH 20	APP COURSE 061°	FAF ALT 1500 FT	Descent GR	MDA 430	TDZE 71	ALS 06L- 1427FT/ 06R- 1378FT	
						LDA 06L- 9478FT/ 06R- 9485FT	



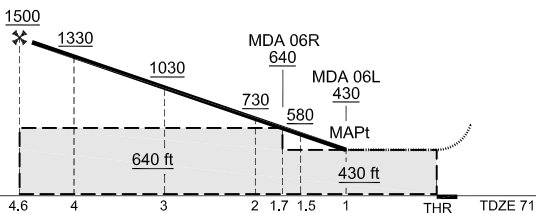
**EMERG SAFE ALT 100 NM 4000**

**DO NOT DESCEND BELOW THE DESCENT PROFILE GIVEN ALTITUDES TO BE CONSIDERED AS MNM ALT**

**TA 3000**

**MISSED APPROACH**

At MAPt climb to 1000 ft, intercept VKL R-061. At R-061/2 DME climb to 3000 ft and turn left to intercept the ARC 11 at R-326. Continue TACAN RWY 06L/06R.



06L	+	+	+	+	S-ALS
06R	+	+	+	+	S-ALS

CATEGORY	A	B	C	D	E
S-SRE 06L	<b>430</b> -1100 359 (400-1.1)			<b>430</b> -1200 359 (400-1.2)	
S-SRE 06R	<b>640</b> -1500 568 (600-1.5)		<b>640</b> -2000 568 (600-2.0)	<b>640</b> -2400 568 (600-2.4)	<b>640</b> -2800 568 (600-2.8)
CIRCLING	<b>490</b> -1900 418 (500-1.9)	<b>570</b> -2800 498 (500-2.8)	<b>780</b> -3700 708 (800-3.7)	<b>780</b> -4600 708 (800-4.6)	<b>880</b> -6500 808 (900-6.5)

**SRE RWY 06L/06R**

51°39.43'N  
005°42.47'E

**VOLKEL (EHVK)**

CHANGES: ALS

RNLAF 1 JUL 2010

**MIPS INSTRUMENT APPROACH CHART**

AD ELEV 72

**ILS/DME RWY 24R VOLKEL (EHVK)**

DUTCH MIL 264.325 132.350		RAPCON SOUTH 379.925 123.175		VOLKEL TWR 372.225 136.075			GND CTL 386.775	
LOCALIZER / DME VLO 110.750 / CH 44Y		APP COURSE 238°	GS INTCP ALT 1500 FT	GS 3°	DA 264	TDZE 64	ALS 2795 FT	LDA 24R-9478 FT

**CAUTION:**

a) DO NOT MANOEUVRE SOUTH OF R-060

**NOTE:**

- ① CIRCLING ONLY ALLOWED FOR HOMEBASE ACFT
- ② CIRCLING NOT AUTHORIZED NORTH OF RWY 06L-24R

0°W (2005)

GZR CH 111

GP 330.050 LOCALIZER VLO 110.750 CH 44Y

IAF 13

5.2 VKL 4.4 VLO

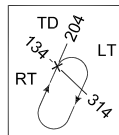
VKL CH 20

MSA VKL 25 NM

1700

EHV CH 119

IAF 51°51.18'N 005°50.95'E



**EMERG SAFE ALT 100 NM 4000**

**MISSED APPROACH**  
At MAPt climb to 1000 ft. Intercept R-236 outbound. At R-236/3 DME climb to 3000 ft and turn right to intercept R-024/13 DME. Continue ILS/DME RWY 24R.

**TACAN**  
GP INOP 3.0 VKL 2.2 VLO  
GP INOP 1.0 VKL 0.2 VLO  
GP INOP 5.2 VKL 4.4 VLO

**TA 3000**  
FL 145 3000  
GS 3° TCH 56

TDZE 64 0.1 → 2.0 → 2.2 →

CAT I

CATEGORY	A	B	C	D	E
ILS MINIMA ACCORDING TO PANS-OPS; NOT ACCORDING TO APATC-1					
S-ILS 24R	264 -800 200 (200-0.8)				N.A.
S-LOC 24R	430 -800 366 (400-0.8)			430 -1200 366 (400-1.2)	N.A.
CIRCLING	470 -1900 398 (400-1.9)	570 -2800 498 (500-2.8)	780 -3700 708 (800-3.7)	780 -4600 708 (800-4.6)	880 -6500 808 (900-6.5)

CHANGES: ALS

RNLAF 1 JUL 2010

**ILS/DME RWY 24R**

51°39.43'N 005°42.47'E

**VOLKEL (EHVK)**

**MIPS INSTRUMENT APPROACH CHART**

**TACAN RWY 24R/24L VOLKEL (EHVK)**

AD ELEV 72

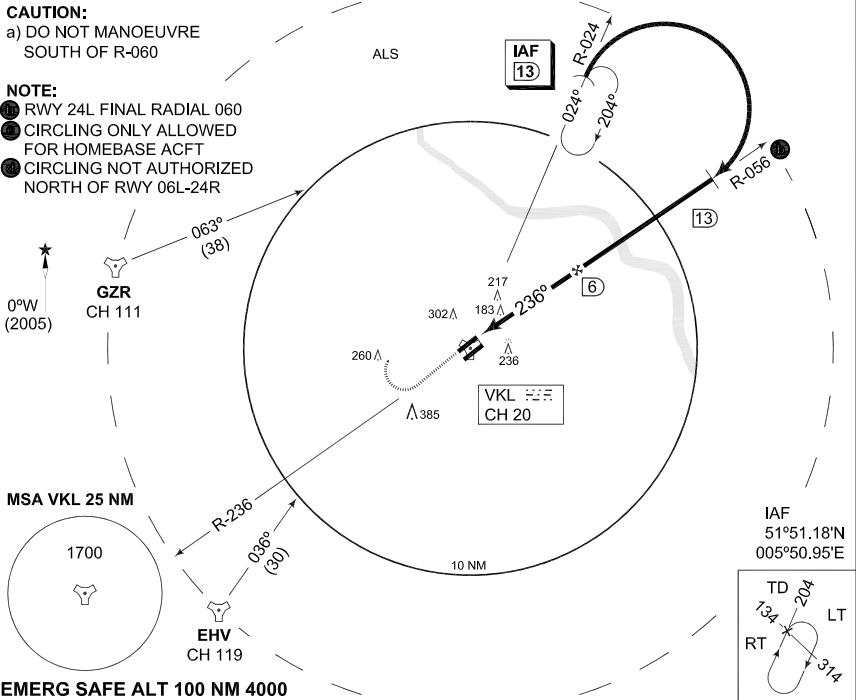
DUTCH MIL 264.325 132.350		RAPCON SOUTH 379.925 123.175		VOLKEL TWR 372.225 136.075		GND CTL 386.775	
TACAN VKL CH 20	APP COURSE 236°	FAF ALT 1500 FT	Descent GR	MDA 430	TDZE 64	ALS 06L-2795FT/06R-1388FT	LDA 06L-9478FT/06R-9485FT

**CAUTION:**

a) DO NOT MANOEUVRE SOUTH OF R-060

**NOTE:**

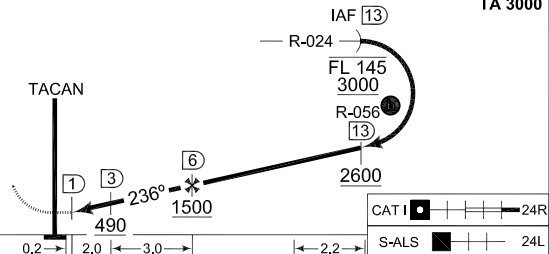
- ① RWY 24L FINAL RADIAL 060
- ② CIRCLING ONLY ALLOWED FOR HOMEBASE ACFT
- ③ CIRCLING NOT AUTHORIZED NORTH OF RWY 06L-24R



**TA 3000**

**MISSED APPROACH**

At MAPt climb to 1000 ft.  
At R-236/3 DME climb to 3000 ft and turn right to intercept R-024/13 DME.  
Continue TACAN RWY 24.



CATEGORY	A	B	C	D	E
S-TACAN 24R	430 -800 366 (400-0.8)			430 -1200 366 (400-1.2)	
S-TACAN 24L	430 -1200 366 (400-1.2)			430 -1600 366 (400-1.6)	
CIRCLING	470 -1900 398 (400-1.9)	570 -2800 498 (500-2.8)	780 -3700 708 (800-3.7)	780 -4600 708 (800-4.6)	880 -6500 808 (900-6.5)

**TACAN RWY 24R/24L**

51°39.43'N  
005°42.47'E

**VOLKEL (EHVK)**

CHANGES: ALS

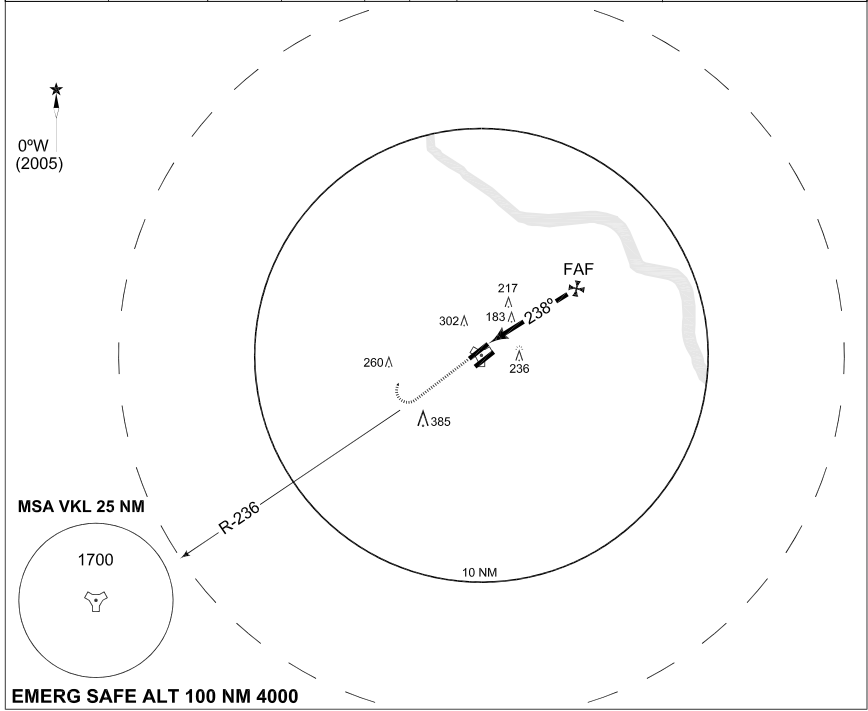
RNLAF 1 JUL 2010

**PANS OPS  
INSTRUMENT APPROACH CHART**

AD ELEV 72

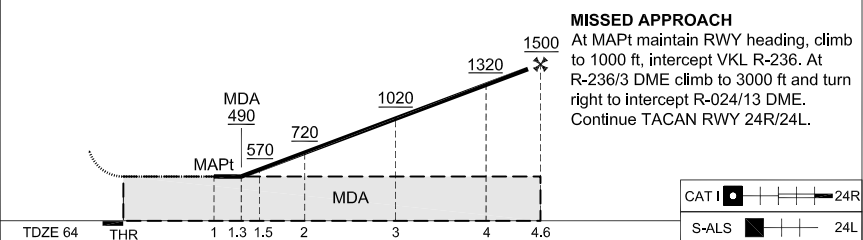
**SRE RWY 24R/24L  
VOLKEL (EHVK)**

DUTCH MIL 264.325 132.350		RAPCON SOUTH 379.925 123.175		VOLKEL TWR 372.225 136.075		GND CTL 386.775	
TACAN VKL CH 20	APP COURSE 236°	FAF ALT 1500 FT	Descent GR	MDA <b>430</b>	TDZE 64	ALS 06L-2795FT/06R-1388FT	LDA 06L-9478FT/06R-9485FT



**EMERG SAFE ALT 100 NM 4000**

**DO NOT DESCEND BELOW THE DESCENT PROFILE GIVEN ALTITUDES TO BE CONSIDERED AS MNM ALT**



CATEGORY	A	B	C	D	E
S-SRE 24R	<b>490</b> -1100 426 (500-1.1)		<b>490</b> -1200 426 (500-1.2)	<b>490</b> -1600 426 (500-1.6)	
S-SRE 24L	<b>490</b> -1500 425 (500-1.5)		<b>490</b> -1600 425 (500-1.6)	<b>490</b> -2000 425 (500-2.0)	
CIRCLING	<b>490</b> -1900 418 (500-1.9)	<b>570</b> -2800 498 (500-2.8)	<b>780</b> -3700 708 (800-3.7)	<b>780</b> -4600 708 (800-4.6)	<b>880</b> -6500 808 (900-6.5)

**SRE RWY 24R/24L**

51°39.43'N  
005°42.47'E

**VOLKEL (EHVK)**

CHANGES: ALS

RNLAF 1 JUL 2010