

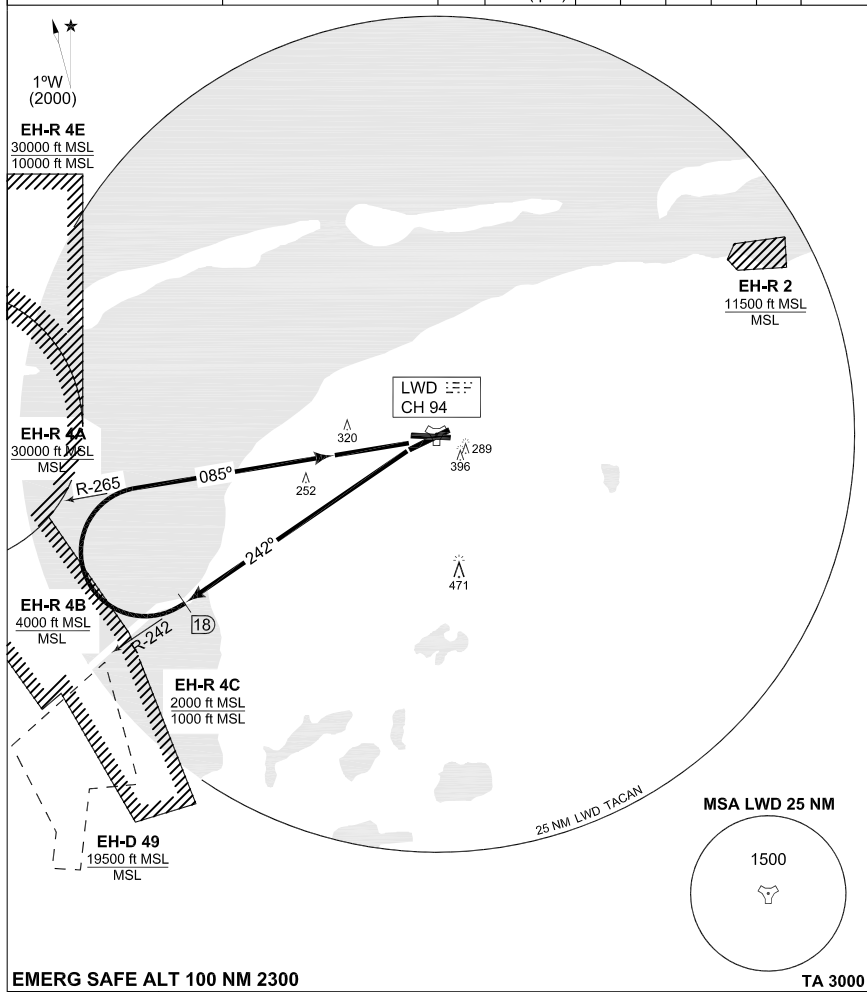
**TERPS INSTRUMENT DEPARTURE CHART**

**LW1**

**LEEWARDEN (EHLW)**

AD ELEV 3

GND CTL 281.550	LEEWARDEN TWR 247.675 120.700	RAPCON NORTH 337.000 122.100				DUTCH MIL 264.325 132.350			
		RWY <b>24</b>	Knots V/V (fpm)	120 600	180 900	240 1200	300 1500	360 1800	to <b>1000 ft</b>



**EMERG SAFE ALT 100 NM 2300**

**TA 3000**

LEEWARDEN 1 (RWY 24)	- Climb on R-242 outbound Leeuwarden TACAN. - At 18 DME turn right to intercept R-265 inbound and proceed to Leeuwarden TACAN.
-------------------------	---

**NOTE:** Procedure may be changed by ATC when BREEZANDDIJK firing range is active.

CHANGES: EDITORIAL

RNLAF 6 MAY 2010

**LW1**

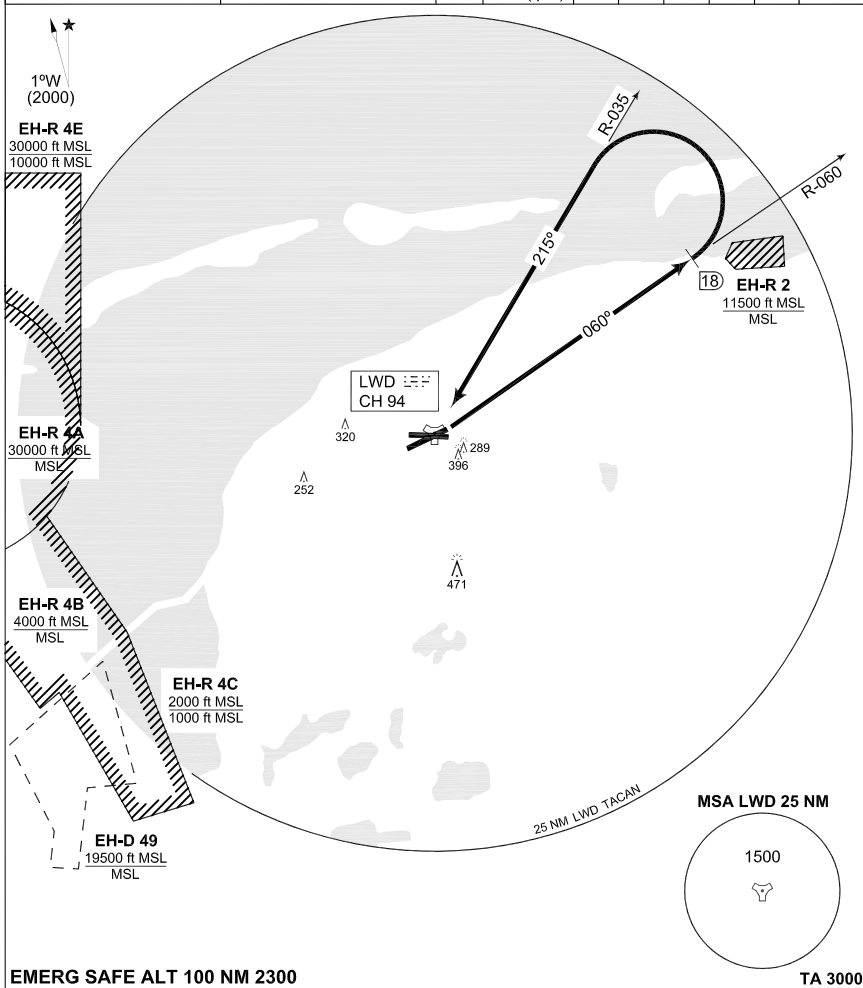
53°13.52'N  
005°45.15'E

**LEEWARDEN (EHLW)**

**TERPS INSTRUMENT DEPARTURE CHART**

**LW3 LEEUWARDEN (EHLW)**

GND CTL 281.550		LEEUWARDEN TWR 247.675 120.700		RAPCON NORTH 337.000 122.100				DUTCH MIL 264.325 132.350			
				RWY <b>06</b>	Knots V/V (fpm)	120 540	180 810	240 1080	300 1350	360 1620	to <b>1000 ft</b>



CHANGES: EDITORIAL

LEEUWARDEN 3 (RWY 06)	<ul style="list-style-type: none"> <li>- Climb on R-060 outbound Leeuwarden TACAN.</li> <li>- At 18 DME turn left to intercept R-035 inbound and proceed to Leeuwarden TACAN.</li> </ul>
-----------------------	--

**LW3**

53°13.52'N  
005°45.15'E

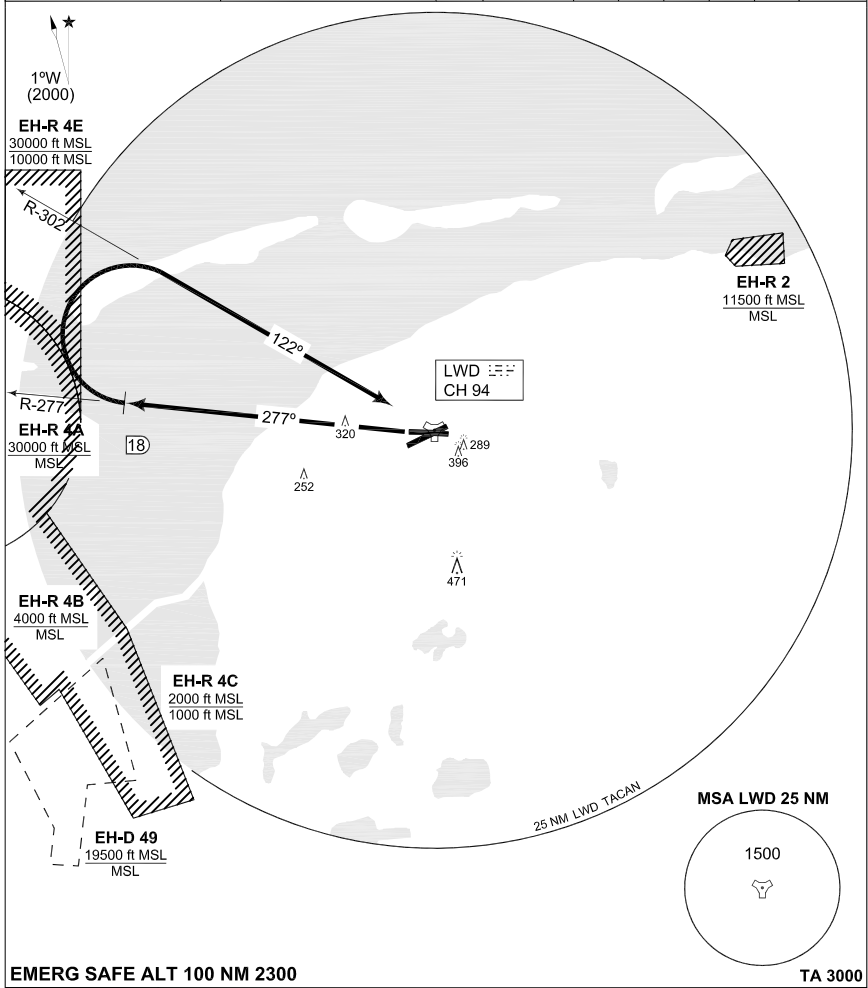
**LEEUWARDEN (EHLW)**

RNLAF 6 MAY 2010

**TERPS  
INSTRUMENT DEPARTURE CHART**

**LW5  
LEEWARDEN (EHLW)**

GND CTL 281.550	LEEWARDEN TWR 247.675 120.700	RAPCON NORTH				DUTCH MIL			
		337.000	122.100	264.325	132.350				
		RWY	Knots	120	180	240	300	360	
		27	V/V (fpm)	550	825	1100	1375	1700	1000 ft



**EMERG SAFE ALT 100 NM 2300**

**TA 3000**

CHANGES: EDITORIAL

LEEWARDEN 5 (RWY 27)	<ul style="list-style-type: none"> <li>- After take-off RWY 27 intercept R-277 outbound Leeuwarden TACAN.</li> <li>- At 18 DME turn right to intercept R-302 inbound Leeuwarden TACAN.</li> </ul>
-------------------------	---

**LW5**

53°13.52'N  
005°45.15'E

**LEEWARDEN (EHLW)**

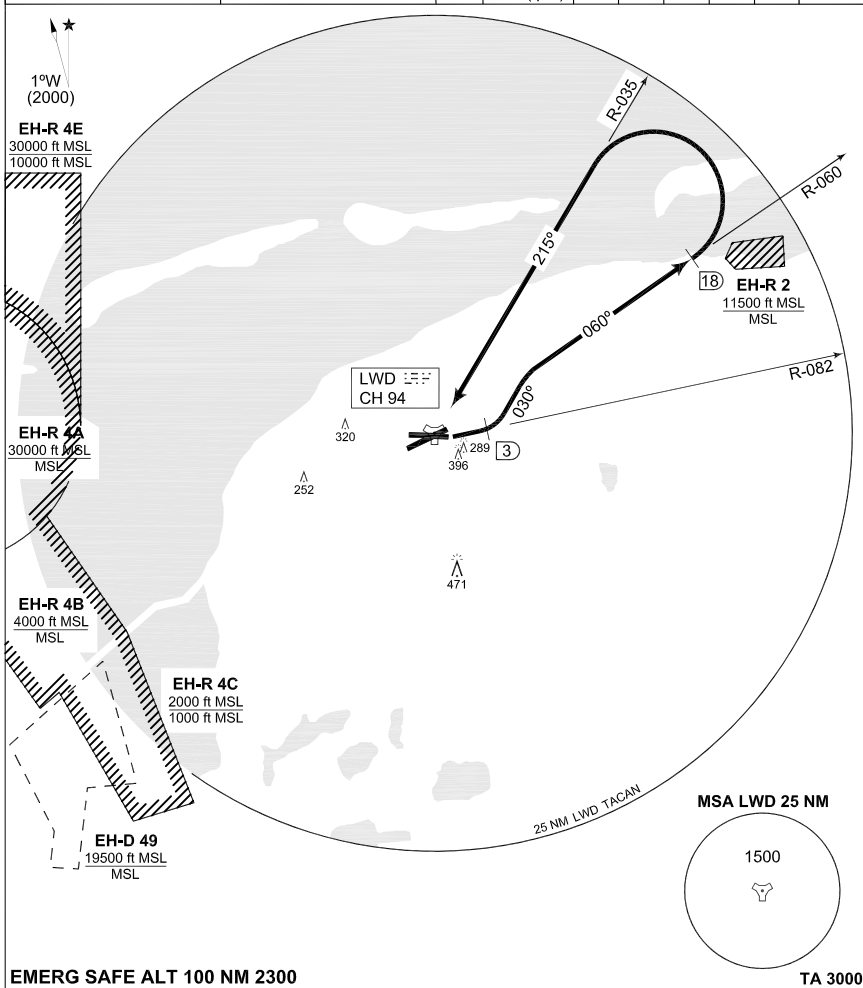
RNLAF 6 MAY 2010

**TERPS INSTRUMENT DEPARTURE CHART**

**LW7**

**LEEUWARDEN (EHLW)**

GND CTL 281.550		LEEUWARDEN TWR 247.675 120.700		RAPCON NORTH 337.000 122.100				DUTCH MIL 264.325 132.350			
				RWY <b>09</b>	Knots V/V (fpm)	120 750	180 1125	240 1500	300 1875	360 2250	to <b>1000 ft</b>



CHANGES: EDITORIAL

LEEUWARDEN 7  
(RWY 09)

- After take-off intercept R-082 outbound Leeuwarden TACAN.
- At 3 DME turn left heading 030° to intercept R-060 Leeuwarden TACAN.
- At 18 DME turn left to intercept R-035 inbound Leeuwarden TACAN.

RNLAF 6 MAY 2010

**LW7**

53°13.52'N  
005°45.15'E

**LEEUWARDEN (EHLW)**