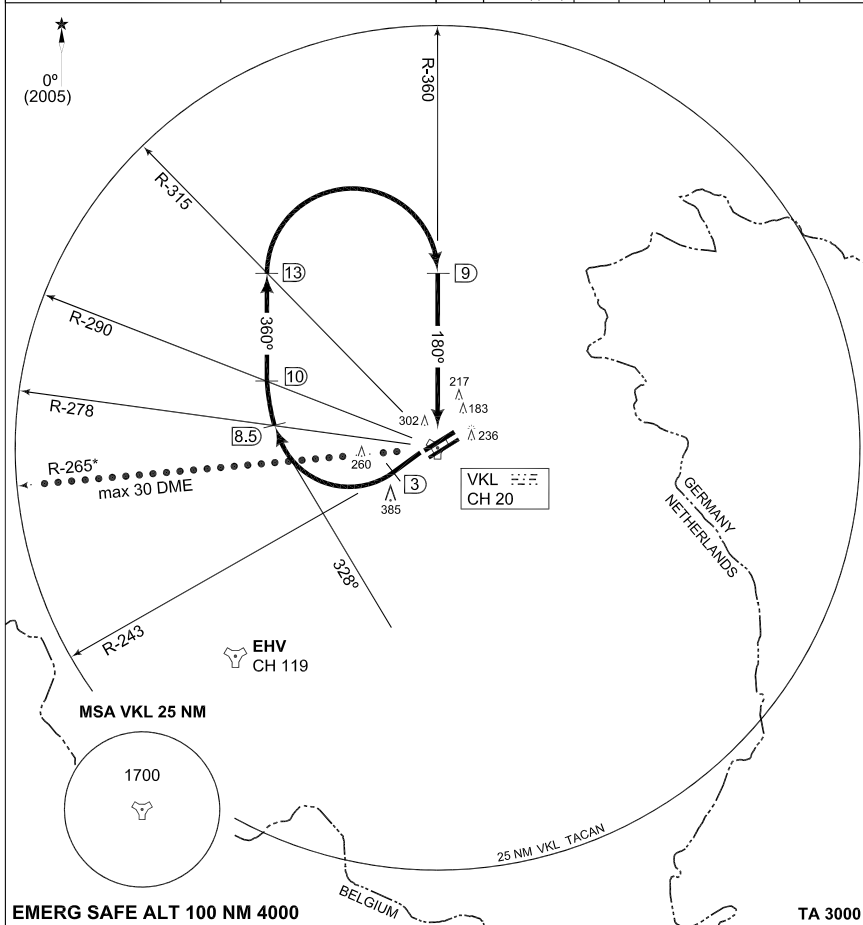


**TERPS
INSTRUMENT DEPARTURE CHART**

AD ELEV 72

**VK1
VOLKEL (EHVK)**

GND CTL 386.775	VOLKEL TWR 372.225 136.075	RAPCON SOUTH				DUTCH MIL			
		RWY	Knots	120	180	240	300	360	to
		24	V/V (fpm)	480	720	960	1200	1440	350 ft



EMERG SAFE ALT 100 NM 4000

TA 3000

VOLKEL 1
(RWY 24)

- Climb straight ahead to 3 DME from Volkel TACAN.
- Turn right, heading 328°.
- When passing R-278 turn right, heading 360°.
- When passing R-315 turn right (remain within 20 DME) to intercept R-360 inbound.
- Afterburner climb not approved until cleared by ATC. When cleared climb on R-265 outbound max. to 30 DME.

NOTE: Departure end crossing height: RWY 24R: 39 ft; RWY 24L: 24 ft.

CHANGES: EDITORIAL

RNLAF 6 MAY 2010

VK1

51°39.43'N
005°42.47'E

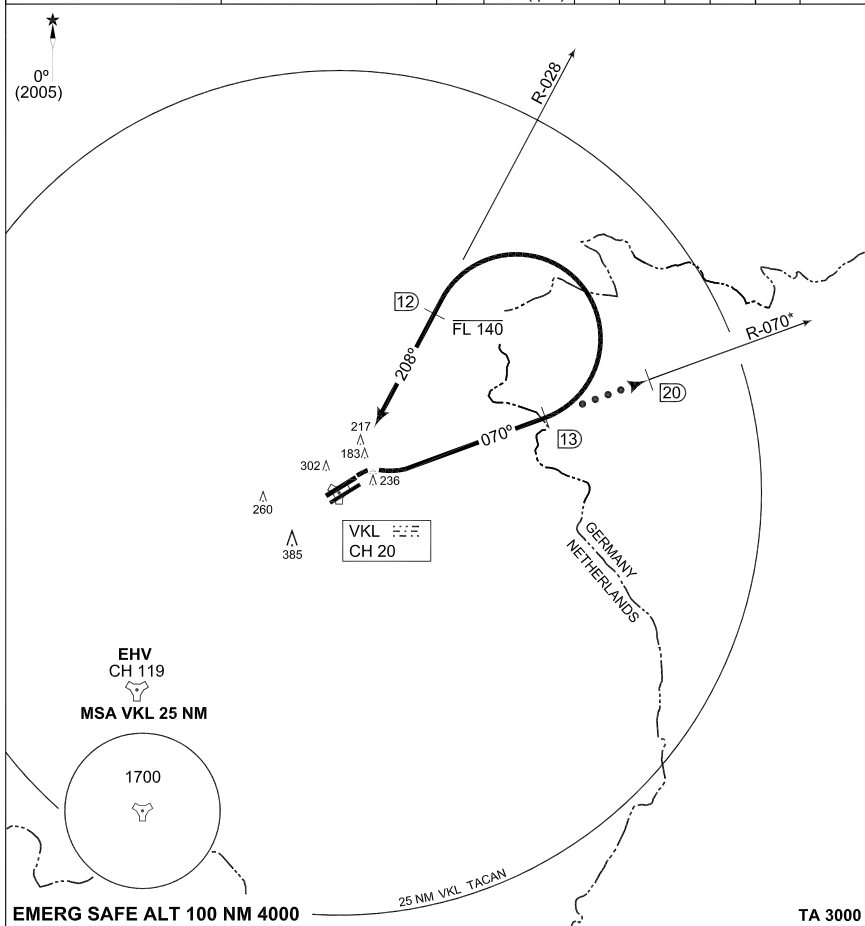
VOLKEL (EHVK)

**MIPS
INSTRUMENT DEPARTURE CHART**

**VK3
VOLKEL (EHVK)**

AD ELEV 72

GND CTL 386.775	VOLKEL TWR 372.225 136.075		RAPCON SOUTH 379.925 123.175				DUTCH MIL 264.325 132.350			
			RWY 06	Knots V/V (fpm)	120 1440	180 2160	240 2880	300 3600	360 4320	to 100 ft



VOLKEL 3 (RWY 06)

- Intercept and proceed outbound on R-070 from Volkel TACAN, climb to FL 140.
- At 13 DME turn left (remain within 20 DME) to intercept R-028 inbound.
- When passing 12 DME on R-028 inbound continue climb.
- * Afterburner climb not approved until cleared by ATC. When cleared climb on R-070 outbound max. to 20 DME.

NOTE: - Departure end crossing height: RWY 06L: 16 ft; RWY 06R: 23 ft.

CHANGES: EDITORIAL

RNLAF 6 MAY 2010

VK3

51°39.43'N
005°42.47'E

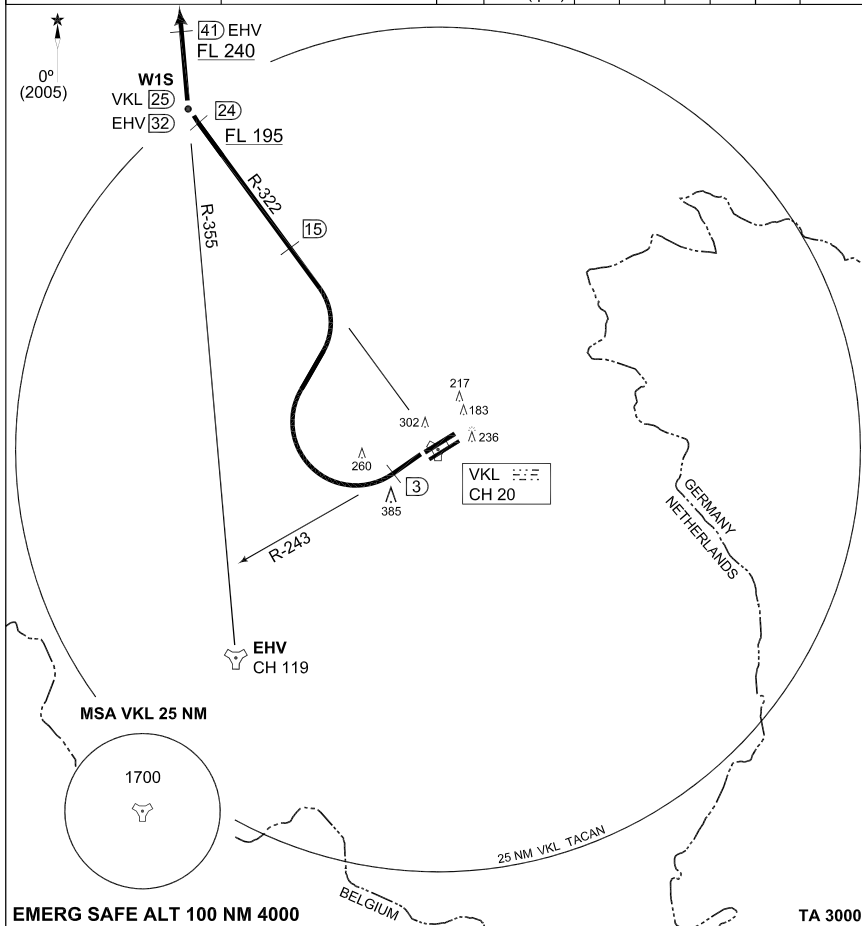
VOLKEL (EHVK)

**TERPS
INSTRUMENT DEPARTURE CHART**

AD ELEV 72

**VK5
VOLKEL (EHVK)**

GND CTL 386.775	VOLKEL TWR 372.225 136.075		RAPCON SOUTH 379.925 123.175			DUTCH MIL 264.325 132.350				
			RWY	Knots	120	180	240	300	360	to
			24	V/V (fpm)	480	720	960	1200	1440	350 ft



EMERG SAFE ALT 100 NM 4000

TA 3000

VOLKEL 5
(RWY 24)

- Climb straight ahead to 3 DME from Volkel TACAN.
- Turn right to intercept R-322 outbound.
- Cross R-322 outbound, 24 DME at FL 195 or above.
- At 24 DME turn right to intercept EHV R-355.
- Cross EHV R-355/41 DME at FL 240, unless instructed otherwise by ATC.

NOTES:

- Departure end crossing height: RWY 24R: 39 ft; RWY 24L: 24 ft.
- If no radiocommunication with Dutch Mil at 15 DME turn right inbound VKL TACAN and contact RAPCON SOUTH.

CHANGES: EDITORIAL

RNLAF 6 MAY 2010

VK5

51°39.43'N
005°42.47'E

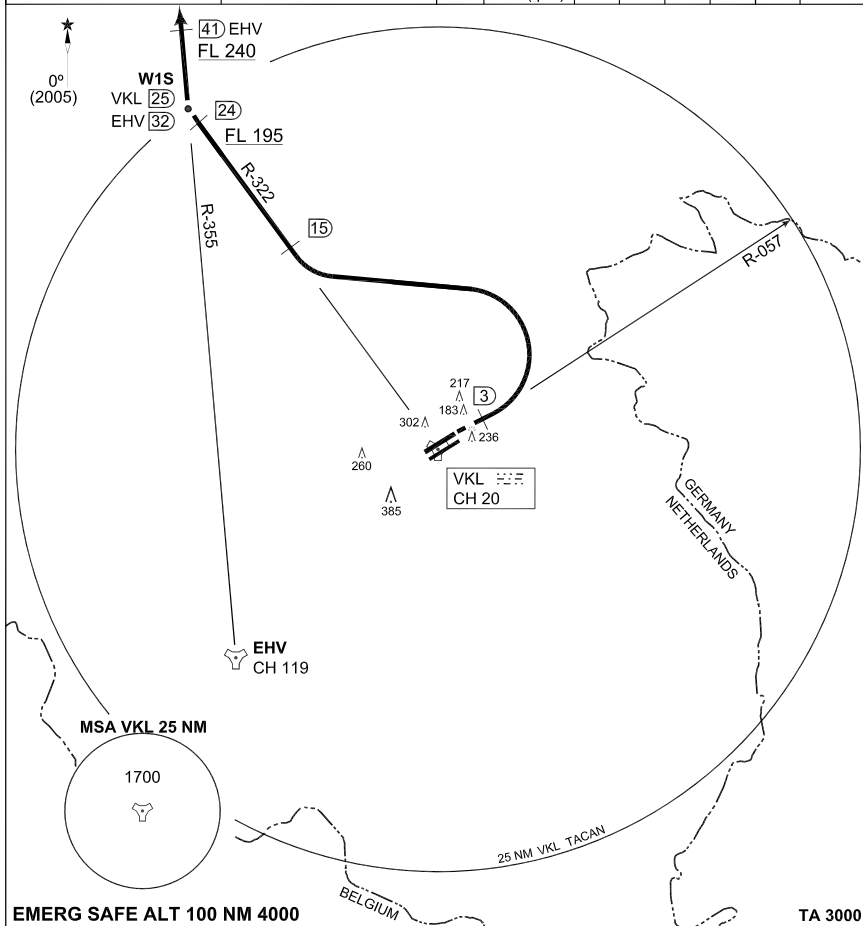
VOLKEL (EHVK)

**TERPS
INSTRUMENT DEPARTURE CHART**

AD ELEV 72

**VK7
VOLKEL (EHVK)**

GND CTL 386.775	VOLKEL TWR 372.225 136.075		RAPCON SOUTH 379.925 123.175				DUTCH MIL 264.325 132.350			
			RWY	Knots	120	180	240	300	360	to
			06	V/V (fpm)	1440	2160	2880	3600	4320	100 ft



- EMERG SAFE ALT 100 NM 4000** **TA 3000**
- | | |
|-------------------|---|
| VOLKEL 7 (RWY 06) | <ul style="list-style-type: none"> - Climb straight ahead to 3 DME from Volk TACAN. - Turn left to intercept R-322 outbound. - Cross R-322 outbound, 24 DME at FL 195 or above. - At 24 DME turn right to intercept EHV R-355. - Cross EHV R-355/41 DME at FL 240, unless instructed otherwise by ATC. |
|-------------------|---|

NOTES:

- Departure end crossing height: RWY 06L: 8 ft; RWY 06R: 23 ft.
- If no radiocontact with Dutch Mil at 15 DME turn right inbound VKL TACAN and contact RAPCON SOUTH.

CHANGES: EDITORIAL

RNLAF 6 MAY 2010

VK7

51°39.43'N
005°42.47'E

VOLKEL (EHVK)