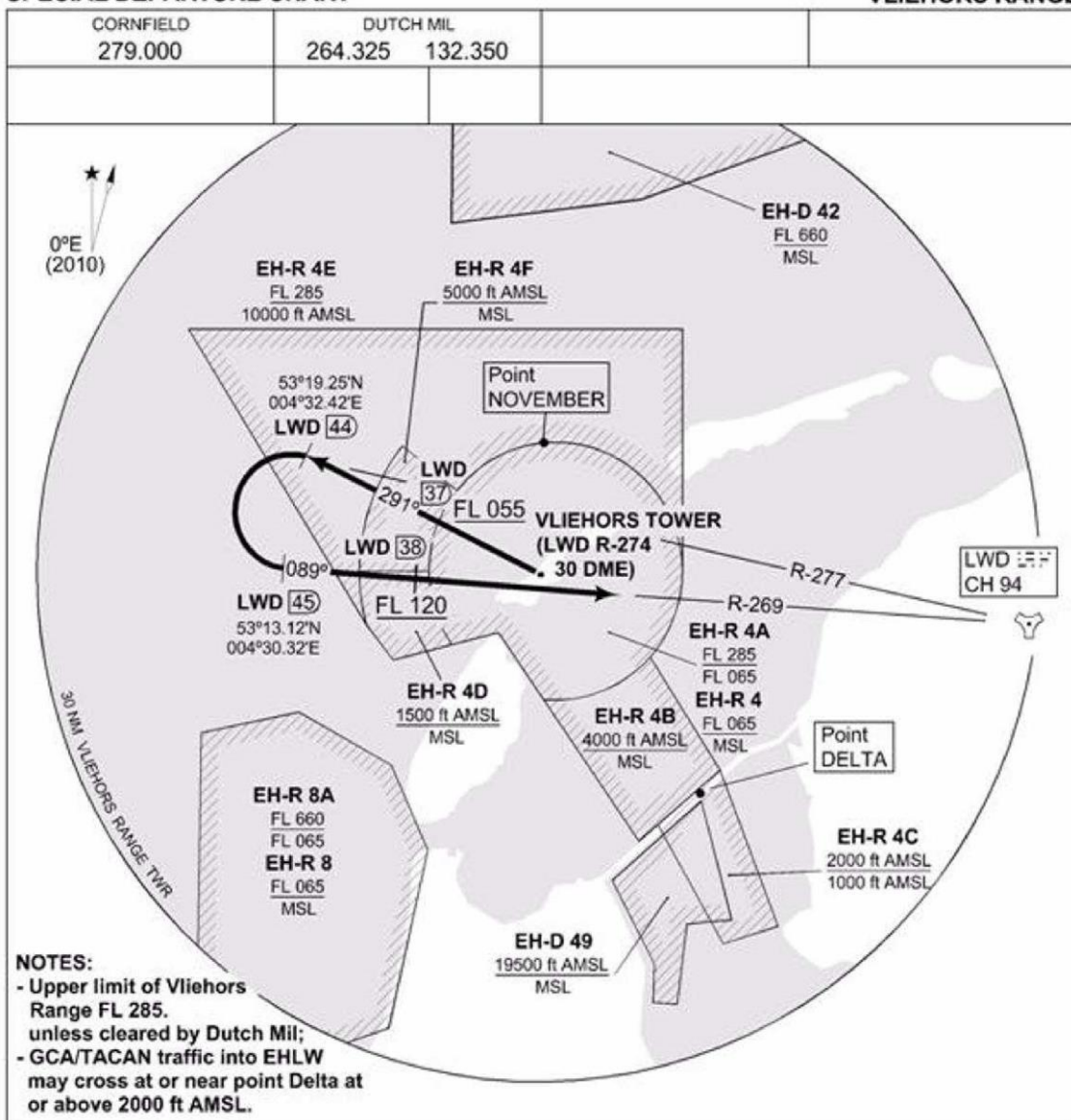


VL 1 DEPARTURE

TERPS SPECIAL DEPARTURE CHART

VL 1 VLIEHORS RANGE



NOTES:
 - Upper limit of Vliehors Range FL 285, unless cleared by Dutch Mil;
 - GCA/TACAN traffic into EHLW may cross at or near point Delta at or above 2000 ft AMSL.

VL 1 TEARDROP IFR DEPARTURE	Following final delivery, proceed outbound on heading 291° from the tower, climbing to FL 120 or above. At 37 DME from LWD TACAN, FL 055 has to be reached. Proceed outbound to 15 NM from the range (LWD TACAN R-277/44 DME) and turn left to intercept LWD R-269 inbound. When cleared to leave the range frequency and established on the departure, contact Dutch Mil. Flight members will follow in sequence. When contact with Dutch Mil and at FL 120 or above, it is permitted to turn inbound before reaching LWD R-277/44 DME.
IMMELMANN IFR DEPARTURE	Departing aircraft may perform an Immelmann manoeuvre (under VMC only) to become established inbound on LWD R-269. Further see above.
LOW LEVEL IFR DEPARTURE (Northern based FRG acft only)	Leave via point NOVEMBER to 53°42'N 006°52'E at 3000 ft AMSL (day) or 2000 ft AMSL (night). Stay clear of all islands by 2 NM and do not leave the Range airspace until cleared by Dutch Mil.
HIGH LEVEL IFR DEPARTURE	To leave the Vliehors Range between 20000 ft and FL 285, stay within the lateral limits of the Range until cleared by Dutch Mil (CH 6). Only when proceeding inbound the EH-D 01-09 a direct call to 'Bandbox Main' is approved. Also stay within the lateral limits of the Range until cleared by 'Bandbox'.

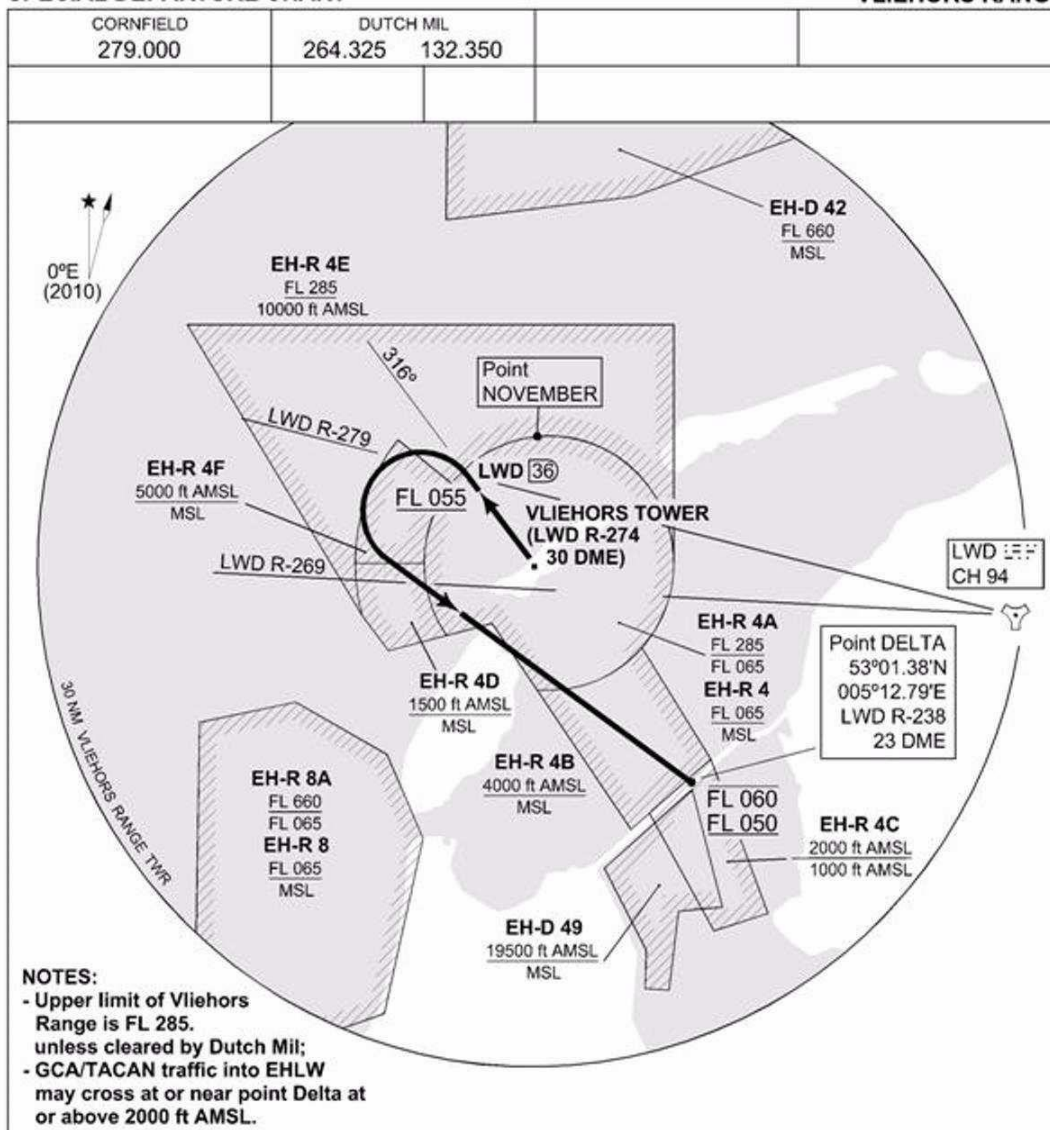
CHANGES: EH-R 8, EH-R 8A, EH-D 42

RNLAF 16 OCT 2014

VL 2 DEPARTURE

TERPS SPECIAL DEPARTURE CHART

VL 2 VLIEHORS RANGE



VL 2 MEDIUM LEVEL TEARDROP IFR DEPARTURE	Following final delivery, proceed outbound on heading 316° from the tower, climbing to max. FL 060. When passing LWD R-279 FL 055 has to be reached and turn left inbound point DELTA (LWD TACAN R-238/23 DME). Contact Dutch Mil when established on the departure and cleared to leave the range frequency. Contact with Dutch Mil shall be established within the boundary of the EH-R 4. Flight members will follow in sequence.
IMMELMANN IFR DEPARTURE	Departing aircraft may perform an Immelmann manoeuvre (under VMC only) to become established inbound on LWD R-269. Further see above.
LOW LEVEL IFR DEPARTURE (Northern based FRG acft only)	Leave via point NOVEMBER to 53°42'N 006°52'E at 3000 ft AMSL (day) or 2000 ft AMSL (night). Stay clear of all islands by 2 NM and do not leave the Range airspace until cleared by Dutch Mil.
HIGH LEVEL IFR DEPARTURE	To leave the Vliehors Range between 20000 ft and FL 285, stay within the lateral limits of the Range until cleared by Dutch Mil (CH 6). Only when proceeding inbound the EH-D 01-09 a direct call to 'Bandbox Main' is approved. Also stay within the lateral limits of the Range until cleared by 'Bandbox'.

CHANGES: EH-R 8, EH-R 8A, EH-D 42

RNLAF 16 OCT 2014